

DATA CENTRE SOLUTION

Innovation for future

ROCCHEGGIANI[®]
care for air

Exponential Demand vs. Environmental Footprint Cooling Management The Green Path of AI Solution for Sustainability

The Green Path to AI

A Low-Carbon future in IT Cooling



Roccheggiani offers **increasingly innovative** and **qualitatively evolved solutions**.

- high energy-efficiency
- reduced environmental impact
- total Life Costing approach

Complete offer for Large Scale Application

Cooling System Control Heat & Smoke

Roccheggiani Solution for Sustainability:

The Green Path to AI

- Design Support
- Project Development
- Customer Service

Cooling Management

- Full Packaged Integrated System
- Indirect Evaporative Cooling Packaged Units

Ventilation and Humidity Management

- R-1234ze Low-GWP Free Cooling Inverter Screw Chillers
- FanWall Units
- 100% Fresh Air Units

Heat & Smoke Control

- Fire Rated Ductworks
- Smoke Control Dampers
- DuctFire Controls

Chimneys for Power Generator

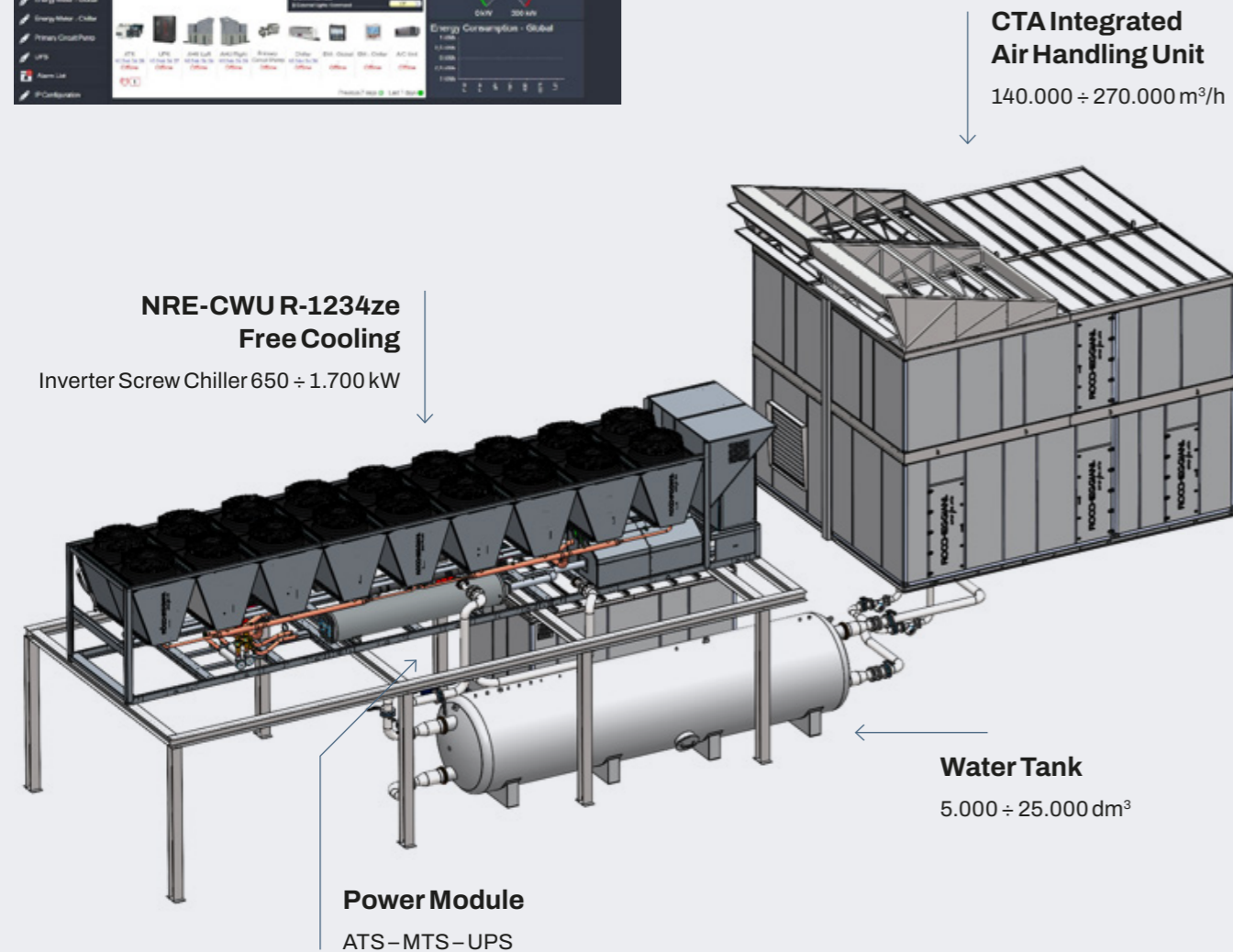
Flues System – Engineering Division

1 Cooling Management

Full Packaged Integrated System

Roccheggiani Integrated System: Confidence and Reliability

- NRE-CWU Low-GWP R-1234ze Free Cooling Inverter Screw Chillers
- CTA Integrated Chilled Water Air Handling Unit
- Power Integration Room
- Water Storage and Distribution System
- Smart Chilled Water System Control and Optimization
- Remote Monitoring and Diagnostic

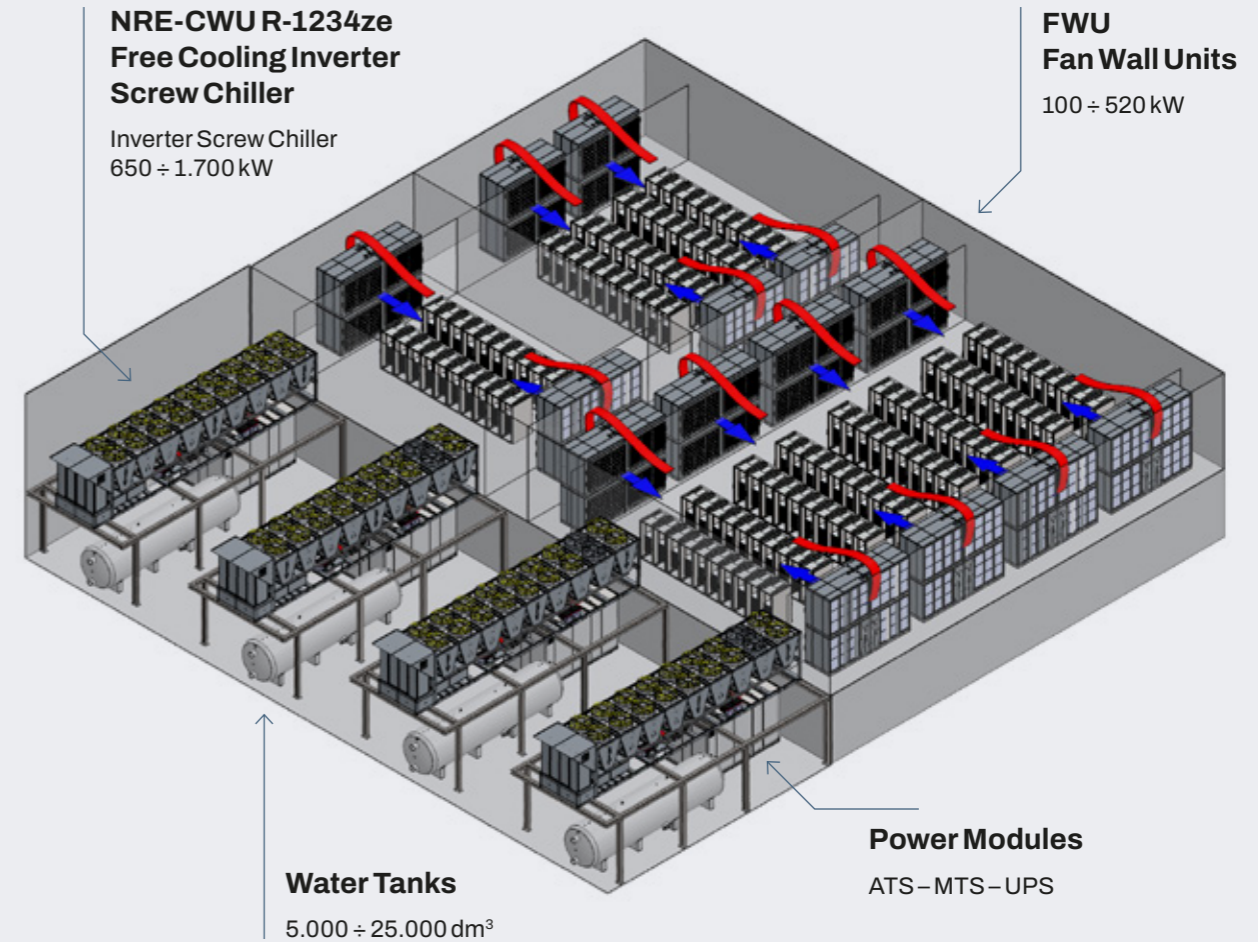


2 Cooling Management

Modular Data Hall Integrated System

HyperScale Data Hall Side Cooling

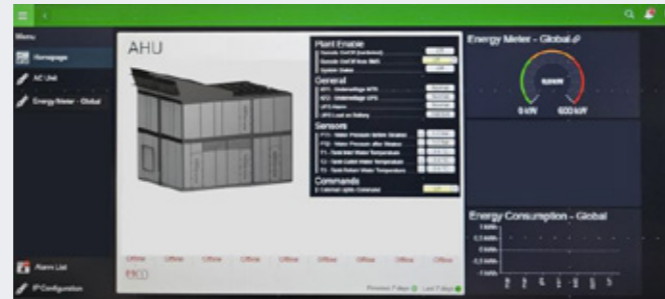
- NRE-CWU R-1234ze Low-GWP Free Cooling Inverter Screw Chillers
- FWU FanWall Chilled Water Units
- 200 to 9.360 kW Multimaster Network
- Power Integration Room
- Water Storage and Distribution System
- Smart Chilled Water System Control and Optimization
- Remote Monitoring and Diagnostic



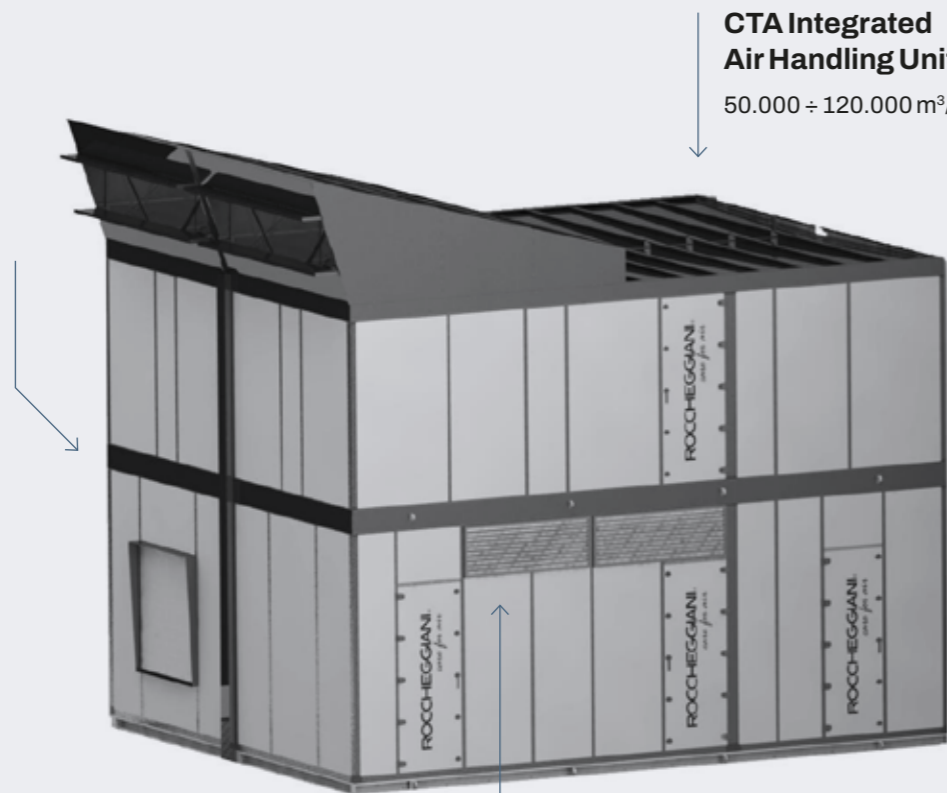
3 Cooling Management Packaged Integrated Unit

All-in-one Packaged Unit

- R-454b or R-1234ze Refrigeration System
- B-Blue Heat Exchanger with Indirect Evaporative Cooling
- Smart System Control and Optimization
- Remote Monitoring and Diagnostic



Power Module
ATS-MTS-UPS



**CTA Integrated
Air Handling Unit**
50.000 ÷ 120.000 m³/h

**B-Blue Heat Exchanger
with Indirect Evaporative Cooling**

Cooling Management Free Cooling Chiller

NRE-CWU

- R-1234ze Low-GWP Free-cooling Inverter Screw Chiller for IT Application
- 11 Sizes 650 to 1.700 kW
- 3 Version: Chiller, Free-cooling, Glycol-free
- Fully Inverter Driven Screw Type Compressor (VFD)
- Low GWP R-1234ze HFO Refrigerant (Global Warming Potential = 7 kg CO₂,eq)
- High Part Load Efficiency
- Fast Restart Functionality
- Variable Flow/Variable Temperature Supply Water Control
- Set point up to 25°C, ΔT up to 12°C



Cooling Management

FanWall Units

FWU

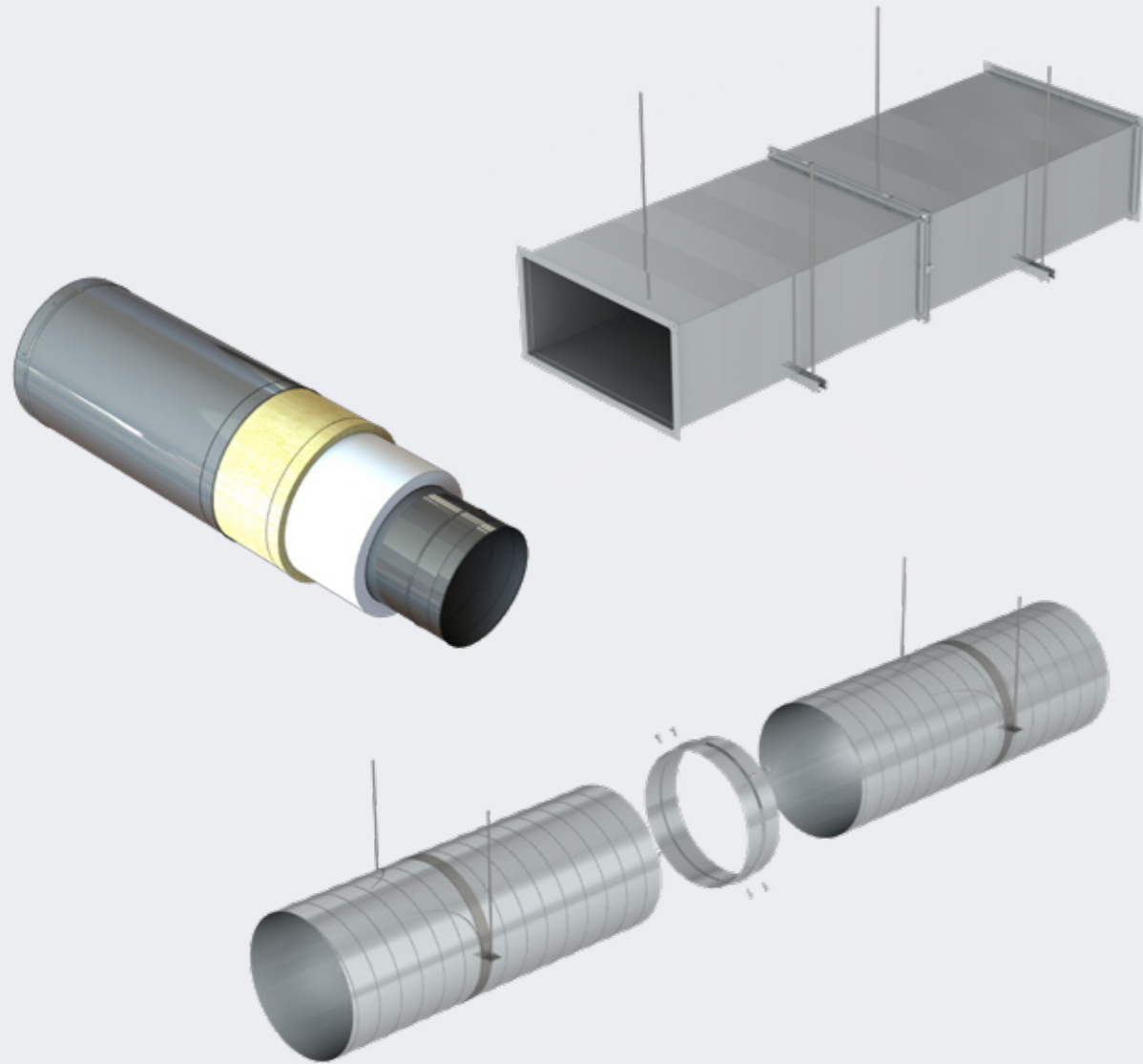
- 7 Sizes from 100 to 520 kW
- 2 – 12 Direct-driven IE5 EC Industrial Fans
- Integrated Control with on-board Ultra capacitor UPS
- Cooling Smart Control
- Pressure Independent Energy Valve
- Thermal Energy Meter
- Front Side Easy Maintenance
- Back-draught damper for Fan Failure Continuous Operation
- Multimaster network up to 18 units
- Parametric Construction
- Customized Design according to Customer Specification
- Right/Left Configuration for side-by-side for Space saving In-Row Assembly
- Optional Configuration: Dual Power Automatic Transfer Switch



Heat & Smoke Control Systems

The Ductfire SR, SR-BS, SC and M products range represent quality solutions able to guaranteeing safety and efficiency even in the most extreme conditions.

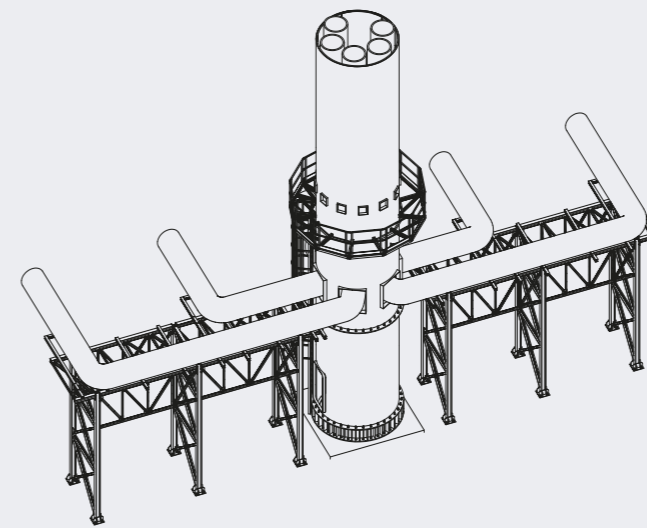
Roccheggiani offer for multi-compartment (Ductfire M) and single compartment (Ductfire SR and SC) installations are designed to ensure greater safety in ventilation systems and are characterized by high versatility and speed of installation.



Flue systems Engineering division

The Engineering division, operating with **UNI EN ISO 9001** certified project management methodologies, is able to manage all the milestones of a project, from the quotation to production planning and quality check, up to the direction of the installation activities on site, ensuring to the customer a complete service:

- technical/regulatory support
- technical-economic feasibility study
- technical inspection and measurements on site
- design and construction of flues
- upon request, design and construction of support poles, support structures for anchoring the flues
- installation on site



Check & test

Calorimetric Enthalpy Chamber

FAT – Factory Acceptance Test

Upon request from the customer, all Roccheggiani products can undergo a Factory Acceptance Test and Factory Performance Test to measure and check air flow, static pressure, vibrations, leaks, noise and heating and chilling capacity.

The company has a double-room Climate Chamber capable of testing Refrigeration Machines with cooling and heating powers above 2 MW; the Chamber is equipped with an Enthalpy Tunnel for accurate measurement.

Standard

EN 14511:2022
EN 14825: 2022
AHRI 550/590: 2017
EN 12599: 2012
ISO 3746: 2010
ISO 9614-2: 1998

Test conditions

Temperature:
-20 °C to +65 °C
Relative humidity:
15% to 98%

Type of test

Air – Air
Air – Water
Water – Air
Water – Water
Hydronic Units

Enthalpy Climate Chamber EN14511 - EN14825





3
production
units

30
countries
in the world

40.000
sq.m.
of production area

1958
year of
foundation



Developing and producing
innovative HVAC&R solutions

ROCCHEGGIANI[®]
care for air



Roccheggiani S.p.a.

Via 1° Maggio, 10 - 60021 Camerano (An) Italy

Tel +39 071 730 00 23

Fax +39 071 730 40 05

info@roccheggiani.it

www.roccheggiani.it

ROCHEGGIANI®
care for air